

## Certificate of conformity

Inspector:

Model number:  
XPB08-F1 XPB08-F1M XPB08-F1M XPB08-F1Z XPB08-F1S  
XPB08-F1 XPB08-F1M XPB08-F1M XPB08-F1Z XPB08-F1S

Please read this manual before working on this product  
The company reserves the right to interpret this manual  
Product appearance please take the physical object as the standard  
Please keep it properly after reading

No notice will be given in case of technical upgrade or software upgrade, please understand

Shanghai little Pearl Electric Co., Ltd

Address: No. 28, North Huanfeng road, Fengjing town, Jinshan district, Shanghai

- This appliance is only to be used with the adapter provided.
- This appliance can be used by children aged from 8 years and above and persons with reduced physical, sensory or mental capabilities or lack of experience and knowledge if they have been given supervision or instruction concerning use of the appliance in a safe way and understand the hazards involved.
- Children shall not play with the appliance.
- Cleaning and user maintenance shall not be made by children without supervision.
- Children of less than 3 years should be kept away unless continuously supervised.



CAUTION:

- During use, please be sure to power off after finishing the current washing program. Do not cut off power before the program is completed. (There is a fan arranged inside the machine to dissipate heat from the motor. If the heat dissipation of the machine do not reach the designed temperature drop range, it will continue to run the washing work, which is easy to cause damage to the motor gear)
- If the power is cut off before the program is completed, do not enter the new washing program immediately, please standby for 10 minutes and then enter the next washing.

## 10. Operating washing machine

1. Put the clothes to be washed into the washing bucket, and then put the appropriate amount of detergent
2. Pour in the right amount of water (water can completely cover the clothes, and about 3 ~ 5 cm above the clothes is preferred)
3. Tap the "Touch the switch" for 1 second and switch the required program with "di" sound. After selecting the program, it will automatically enter the washing program without operation for 3 seconds
4. When the program is finished, the program's signal lamp will flash for 5 seconds and beep for 3 seconds at the same time. After 5 seconds, the signal lamp will be off and the program will be finished
5. Take out washing clothes
6. Disconnect the adapter from the machine and socket
7. Choose the right way to drain the water out of the washing machine
8. Wipe the machine

## 11. Cleaning and maintenance

- \* After washing
- When the washing program is finished, please drain the dirty water from the washing machine, avoiding standing for a long time to spoil the water
- \* Need to carry out
- Please wipe the machine clean and fold the washing machine as the folding method, and put the cover on the bottom. Then place it into the accompanying cloth bag and place the matching adapter

⚠ CAUTION: | Make sure the adapter is disconnected from the socket and machine before cleaning the parts

## 12. Questions and answers

If you have any questions, or suspect that the washing machine has broken down during use, please look at the list first. The following content provides you with the answers to the possible problems and will try to give the solution. Please call the after-sales service hotline if it fails to solve your problem. Please do not dismantle the washing machine by yourself

Phenomenon	Possible causes	How to solve
Three signal lights flash at the same time	Excessive clothing	Reduce the number of washing clothes, and select the program again after waiting for a while.
	Serious entanglement of clothes	Disperse the clothes manually, and select the program again to wash after waiting for a while.
No response when touching the key	Insensitive to touch	Disconnect from the socket, then power on again, and touch the key to select the required program
Residual water after drainage of the machine	Drainage is not exhausted	Drain water again by means of upper drainage. When there is no obvious water drop, dry it with dry cloth.
During the washing process, there are water drops on the upper edge of the machine	Excessive water level	Reduce the amount of water, reduce the water level, and ensure that water in the washing process will not overflow from the edge gap at the top.
Power off suddenly during washing	Poor contact between adapter and the machine base	Plug the adapter and the whole machine back into the power supply.
Loud noise during washing	Sound inside the machine	It is a normal phenomenon that there is a certain sound in the process of the positive and negative rotation of the reduction gear in the reduction motor

## 13. Warranty instructions

### Warranty instructions for "Moyu" Portable folding washing Machine

Dear user: Thank you for using moyu portable folding washing machine.

The whole machine is guaranteed for one year and the main parts (motor / Computer Board) for three years.

- (1) During the warranty period, any failure caused by the quality of the product itself shall be repaired free of charge at the maintenance center authorized by moyu all over the country on the basis of the completed warranty instructions and machine purchase invoices;
- (2) Won't receive machines that broken because of modification or installation of other functions;
- (3) Once this description and purchase invoice are modified, the warranty will expire;
- (4) During each maintenance, the maintenance personnel shall check the machine manufacturing number and user files and fill in the maintenance records;
- (5) Customers are requested to properly keep the purchase invoice and warranty instructions as warranty vouchers, no replacement if lost

The following conditions are beyond the scope of warranty and can be repaired for a fee

- (1) Without three packages of vouchers and valid invoices;
- (2) Failure to operate the machine in accordance with the requirements of the specification;
- (3) Damage caused by the dismantling of non-moyu maintenance personnel;
- (4) Faults, scratches or breakage caused by movement or fall;
- (5) If the customer keeps, maintains or uses improperly causing damage;
- (6) Failure or damage caused by irresistible force;
- (7) Where the service life of consumable spare parts expires.

### Names and contents of hazardous substances in washing machines

Name of part	Hazardous substance					
	Lead (Pb)	Mercury (Hg)	Cadmium (Cd)	Hexavalent chromium (Cr(VI))	Polybrominated biphenyl(PBB)	Polybrominated diphenyl ether(PBDE)
Computer Board	×	○	○	○	○	○
Shell / barrel	○	○	○	○	○	○
Drainage pipe	○	○	○	○	○	○
Power Cord	○	○	○	○	○	○
Motor	○	○	○	○	○	○
Packaging and printing	○	○	○	○	○	○

This form is prepared in accordance with SJ / T11364

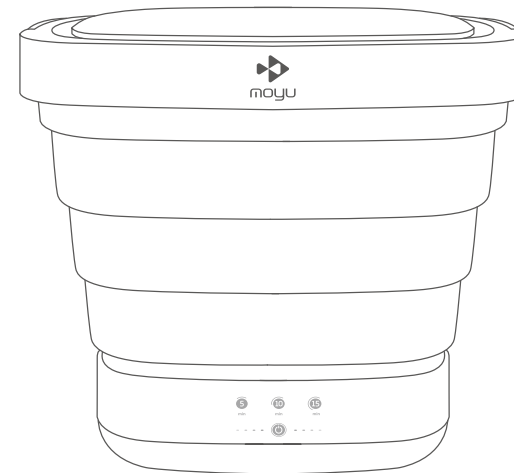
○ Represents the hazardous substance content in all homogeneous materials of the component within the limits specified in GB / T26572.

× Indicates that the content of the hazardous substance in at least one homogeneous material of the component exceeds the limit specified in GB / T26572.

The parts included in the above list vary slightly according to the type of the product.



## Instruction Manual



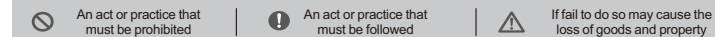
## Portable Folding Washing Machine

<http://moyu.haijiacp.com>

## 1. Safety Caution

Dear Moyu users:

Thank you for choosing Moyu portable folding washing machine. In order that you can use this product better and prevent personal injury and goods damage accident, please be sure to read and follow the contents with these signs in this manual.



- ⚠ Working scenario:  
The portable folding washing machine can't be used to clean the clothing contaminated with gasoline, paint, caustics, or acid-base chemicals
- ⚠ When installation:  
Please use 180V~240V one-way two-hole socket  
Only use the matching adapter, and do not use other substitutes at will, so as to avoid damage to the machine due to inconsistent parameters.  
The plug at the end of the adapter is inserted into the position of the power socket of the whole machine, keeping it in place and stable.  
The adapter plug should be firmly inserted into the boom. After the machine is placed stably, the plug should touch the bottom easily.
- ⚠ When installation:  
Do not place the washing machine in an excessively humid environment such as a bathroom;  
Please do not install or use washing machine in the environment with temperature below 5°C
- ⚠ Maintenance:  
Please use appropriate detergent for decontamination. When using detergent, please pay attention to preventing the detergent from splashing into your eyes. If detergent gets into your eyes, rinse eyes immediately with clear water.  
Wipe the plug regularly with a dry cloth (Dust accumulation or moisture, etc., may lead to poor contact)  
Children must stay away from powdered detergent used to clean washing machines  
Please do not tilt or move the machine during operation (May cause leakage, etc.)
- ⚠ Maintenance:  
Please do not touch the adapter plug with wet hands. Please do not pull out the adapter by hand.  
Please do not store gasoline or other flammable gases or liquids near the washing machine. (In case of fire)  
Please do not pour water or water into the lower part of the washing machine. (Will cause the machine motor damage)  
Please do not put hot water above 60°C directly into the machine to wash the clothes. (Avoid product deformation due to high temperature, resulting in machine damage)
- ⚠ Malfunction or damage to the machine:  
In case of abnormality or failure, please stop using immediately, pull out the adapter plug and turn off the power.  
Do not repair or replace any part of the washing machine, and do not attempt to repair the washing machine unless otherwise specified in this manual. If necessary, please contact the customer service for repair, or see the "questions" section for information  
If the flexible wire of the adapter is damaged, to avoid danger, it must be replaced by a professional from the manufacturer or similar department  
Washing machine repair must be carried out by professional technicians

## 2. Technical data

Adapter input	Adapter output	Rated Power	Maximum mass of dry cloth	Level of Noise	Working status appearance dimension	Folding state appearance size
180V~240V 50/60Hz	Direct current 12V 5A	40W	0.8kg	Washing s60dB	292×292×288mm	292×292×93mm

## 3. Installation steps

- The folding washing machines must be connected properly, or it will not work well
- Water intake and drainage condition and electrical connections must conform to the following or the standards specified in the manual
- Receiving inspection
- Please remove the packing cases, bags and other packing materials of this machine. Count all items according to the packing list. Each washing machine is tested before it goes out, so there will be a small amount of water or water marks left inside the machine

- Select installation position
- The position should be away from heat source and avoid direct sunlight to prevent shell coating from peeling or fading  
Please unroll the washing machine first, and then place it on a stable level

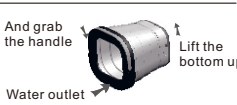
- Drain water away
- The first lower drainage method:  
After the machine is packaged, the drain pipe at the bottom is arranged in Z shape on the base. Place the drain port above the drainage position, and then pull up the manual drain switch on the right side 80 degrees. The machine will start to drain water



- The second lower drainage method:  
Pull the drain pipe on the base along the outlet position, pull the drain pipe out of 3 buckles, pull it straight along the drain pipe and put it into the groove for in-line drainage. Then lay the machine down steadily. When the machine wants to drain water, pull the manual drain switch on the right side up to 80 degrees, and the machine starts to drain water

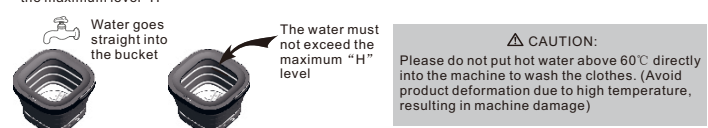


- The third upper drainage method:  
For the sake of emptying the water inside the machine immediately, manual drainage is an option. First power off the whole machine and disconnect the whole machine from the adapter. Lift the handle of the machine with one hand and buckle the other hand into the buckle hole of the base. Tilt the upper mouth of the machine downward and empty the water gradually



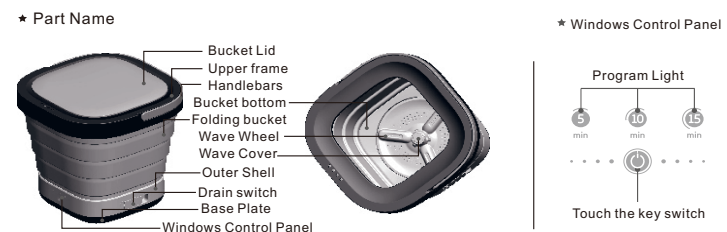
- For using the bottom of the machine for drainage, it may not be able to drain all the water in a short time. Therefore, when using the lower drainage method, it is recommended to use the upper drainage method to drain all the residual water after the completion of drainage
- \* Explanation: Due to the mini portability of the machine, small drainage pipe diameter and slow drainage are normal. Please wait patiently

- Flooding water
- Pour clean water directly into the bucket of washing machine. The injected water level shall not exceed the maximum level "H"



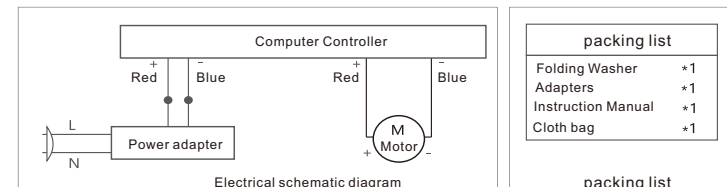
- Adapter connection: The power voltage and frequency shall be the same as the nameplate specification
- Follow these steps to remove the washer connection:
  1. Disconnect the adapter from the socket
  2. Disconnect the adapter from the machine
  3. Drain the water from the washing bucket
  4. Wipe the machine and keep it clean

## 4. Learn about portable folding washing machines



- Detergents
- Function: It can effectively reduce the adhesion between stains and clothing, and enhance the washing effect;
- Detergent selection: It is recommended to use low-foam or non-foam soap powder that is commercially available;
- Solution of adding detergent: When adding detergent, please put the detergent directly into the washing tub.
- Washed clothing
- Able to wash small pieces of clothing (weight less than 0.8KG), such as: underwear, socks, etc.;
- Cannot be used to wash large pieces of clothing (weight more than 0.8kg). Because the whole machine is designed with protection programs, it will not be able to wash large pieces of clothing;
- Since the washing machine is a single washing machine, after the washing process is completed, please take out the agricultural materials manually, wring them out or put them into the dehydrator for dehydration.

## 5. Electrical schematic diagram and packing list



## 6. How to use (pretreatment and placement of clothes)

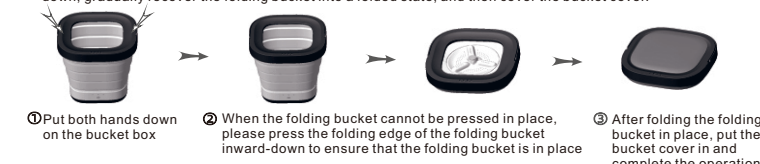
- Pretreatment of clothing
- In order to avoid clogging the drain pipe and affecting the performance of the washing machine, please remove the obvious dirt and fiber inside and outside the laundry out before putting the laundry into the washing machine.
- Placement of clothing
- In order to ensure better washing effect, please open the clothes into the washing tub to avoid the washing effect being unsatisfactory due to the knotting of the clothes.

## 7. Method of use (expansion and folding of washing machines)

- Commencement of washing machines
- First take out the bucket cover, lift the handle in one hand, and then press the bottom of the bucket with the other (do not press the wheel with your hand and place it to cause the deformation of the wheel), then lift the handle hard and gradually unfold the folding bucket of the washing machine.



- Folding of washing machines
- First take out the bucket cover, hold down the upper frame of the washing machine with both hands, then work down, gradually recover the folding bucket into a folded state, and then cover the bucket cover.



## 8. Method of use (adding detergent)

- Pretreatment of clothing
- The detergent is put directly into the washing bucket, and an appropriate amount of detergent is invested according to the amount of washing clothes.
- CAUTION:
  - Do not use strong acid or strong alkaline detergent which may corrode the machine; please use detergent soluble in water, so as not to clog the drain pipe in the washing process
  - Please choose low foam or non-bubble detergent to avoid a large amount of foam overflow in the washing process and affect the washing effect.

## 9. Usage (program settings)

The washing machine is set up with three programs: 5, 10, 15. Among them, 5, 10 and 15 represent the washing time of 5 minutes, 10 minutes and 15 minutes respectively. Please choose the required procedure according to the amount of washing clothes and the degree of dirt.

Touch the button once, the first "5" program is on, then touch again and the second "10" program is on. So loop operation can switch the program. When the desired program is selected, the machine will automatically enter the selected program if there is no action in three seconds. When the program is finished, then the program lights shine for 5 seconds, and the buzzer drops three times and the lights go out after 5 seconds. That is, the program runs.